



2017
Annual
Report
STUDENTS RISING ABOVE



Our Mission Statement

The Students Rising Above community is dedicated to impacting the future through the cultivation of extraordinary youth. SRA invests in low-income, first generation college students who have demonstrated a deep commitment to education and strength of character while overcoming tremendous odds of poverty, homelessness, and neglect.

We help each student to realize his or her potential by guiding and supporting them through college graduation, and into the workforce. Our graduates are breaking the cycle of poverty within their own families, serving their communities, providing a new generation of employees and leaders from diverse backgrounds, and accelerating positive change.



For me, Students Rising Above means community. It has allowed me to make deep connections with students and mentors alike that would not have been possible otherwise.

David Padilla
SRA Class of 2015, UC Berkeley

From the Executive Director

Dear Friends,

What a year of growth and transition for SRA! This year, we are thrilled to be serving more than 13,500 students on the SRA Hub. This high-touch, high-tech, online approach is allowing SRA to implement everything we've learned about our college success over the past 16 years, and reach a much broader group of students. In addition to our direct services program, we are creating a growing online community to reach under-resourced students in underserved regions throughout California and beyond. Our expanding partnership network makes it possible to build on the great work of regional community organizations, while lending the unique college knowledge of our Hub advisors.

This year also marked the launch of our Alumni Association, bringing together the 225 students who have already graduated from college and today are leaders in the areas of research, policy, social work, and business. Our alums are now returning to the program as volunteers, mentors, staff members, and even Board members!

However, there is more work to be done. Nationwide, students from low-income backgrounds are less likely to graduate from college. As a result, only 10% of youth from low-income families hold a bachelor's degree by age 25, compared to 77% of middle to higher-income youth.¹ Family pressures, survivor guilt, and other stresses can derail even those college-bound students with 4.0 GPAs. Our program is determined to change these statistics—with our comprehensive support, mentoring, and resources of our direct services program, 90% of SRA students graduate from college within five years.

At the heart of our growth still lies our unwavering commitment to our students and their success. This year, the largest class in SRA's history—95 new graduates—will now have exponentially greater access to economic and leadership opportunities.

You are an integral part of SRA's success. Thank you for believing in our students—we are so excited for what's next!

Warm regards,



Carolina Martín
Executive Director

1. Pell Institute for the Study of Opportunity in Higher Education.

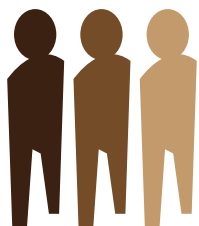
Student Demographics



95% are first-generation college students



100% low to moderate income



94% identify as students of color



30% are in foster care, guardianships, or on their own



21% have experienced homelessness



495 students served



13,500+ students served



STUDENT SPOTLIGHT

Selena Hernandez

"In high school, I never thought that college would be possible for me. However, SRA made this dream a reality. Whether it was financially, academically, or emotionally, Students Rising Above has been right by my side. SRA helped me through my college application process and I was accepted to many colleges with their support. Today, I am a first-generation college junior studying sociology and education at the University of California Santa Cruz, and in 2018, I will be the first to graduate college from my family.

This spring, I had the opportunity to study abroad in a multi-city program. My program was both in London and Paris and throughout I had the privilege to go to Spain, Italy, and Greece. I had never thought in a million years to go and study abroad but with SRA's support, we made it happen.

Thanks to SRA, I have become a strong, independent, and successful woman. Thank you always."

Selena Hernandez
SRA Class of 2014



Selena interned
with Aim High,
Summer of 2015.



Students Rising Above

has been serving students in our direct services program for 16 years. In 2014, the SRA Hub allowed us to offer the same knowledge, resources, and advising through an online platform. Both channels of the SRA program encompass the same core philosophy—that every student deserves comprehensive and personalized support for the academic, financial, physical and emotional demands of college.



Program Model



COLLEGE READINESS AND ACCESS

From the start, each student is matched with a professional Advisor and a volunteer Social Mentor. Advisors and Mentors work together to provide logistical and emotional support 24/7. SRA helps students navigate the college and financial aid application process, select the best-fit colleges, negotiate optimal financial aid, and enroll.

FINANCIAL SUPPORT AND LITERACY

Students learn from the outset college is a business decision, and they practice maximizing financial aid and obtaining competitive scholarships. After leveraging all forms of financial aid, SRA provides direct financial assistance to Direct Services Program students to help close the financial aid gap, and to cover expenses not covered by financial aid, such as living expenses and textbooks.

COLLEGE PERSISTENCE

SRA stays in close contact throughout college, helping students adjust to social and academic challenges of college life; manage expenses; and overcome a variety of academic, financial, and personal obstacles. We ensure students have comprehensive healthcare and dental coverage, and assist with finding care if needed.

COMPREHENSIVE CAREER DEVELOPMENT

Through our six-year career development curriculum, students are prepared to successfully transition into the workforce with a robust set of experiences and professional skills. Students attend targeted workshops, work with resume editors, and receive personalized career coaching. We place over 50% of our students in competitive internships each year.

100% of SRA direct services students accepted to a four-year college

85% of SRA students land career-ladder jobs or enter graduate school within a year of college graduation

93% SRA college persistence rate

91% SRA Bachelor's Degree completion rate

34% National Bachelor's Degree completion rate for low-income youth

\$7,975 average student debt load for SRA alumni

\$37,172 average student debt load for US college graduates

STUDENT SPOTLIGHT

Eric Manzanares

SRA graduate Eric Manzanares exemplifies what students can accomplish with the right support. He grew up with teenage parents, and was following the footsteps of many of his peers, most of whom are now incarcerated or have passed away due to community violence. Eric hit a point in his life where he realized he needed to choose a different path. Eric's SRA Advisor, Lorna Contreras, is an SRA alum and understands the tug-of-war between family and school. She helped Eric see the longer-term benefits of college, and in 2013, he enrolled at UC Merced as an Economics major.

Despite having been a talented student throughout his life, Eric, like many first-generation college students, found the transition to college difficult. Struggling in his classes, together with feeling like he needed to be home for his family, made him feel unfit for college. The stress made it hard to study. Again Lorna discussed the bigger picture with Eric, while SRA connections helped his mother become a legal guardian for her nieces and nephews so she would be eligible for state and county benefits.

"Lorna was a second mom in this whole journey," says Eric, "I could go to her at any time I needed her, but without judgment. Lorna was that one person that I could be completely vulnerable and express myself with."

Eric regained his academic momentum. Eric diligently attended every SRA Career Readiness Workshop and Career Exploration event that he could (including a June 2017 Career Insight Event at Goldman Sachs). SRA provided Eric with professional attire and helped him secure two paid internships at the California Public Utilities Commission—one in the Administrative Law Judge Division and another the next year in the Office of CPUC President Piker—and then another internship at Wells Fargo in the Corporate Risk Department.

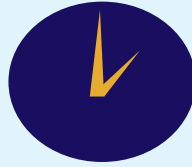
In June 2017, Eric graduated from UC Merced and worked with SRA's Career Development Department to find a job in the financial industry sector. Today he's a Capital Market Associate at Orinda Asset Management. Students Rising Above could not be prouder of this young man and his bright future!

Eric Manzanares





Over **13,500**
registered
users



24-hour response
time to all student
questions



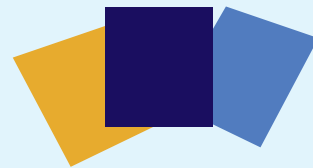
900+ financial
aid budgets
created



3,400+
resumes
created



Over **100** community
workshops in Fall 2017



450+ resources,
articles, lesson plans,
and worksheets
available to students
and teachers

Since its founding in 2014, the SRA Hub has become SRA's online home. It's allowed us to take our 16 years of experience supporting first-generation students and offer that same support to students in underserved districts throughout California and beyond. Through lesson plans, workshops, webinars, and articles, students now have access to critical information that makes college an attainable reality. Overstretched teachers, counselors and non-profit program staff can implement ready-made college and career readiness tools.

"Yesterday I used the Hub's resume lesson plan—it was SO useful! The links and articles embedded in the lesson were great. What a gift!! Thank you!"

Kristen Jurkovich
High School Counselor

During my college application season, I have received a lot of support from both of my SRA advisors. I just want to say how much I appreciate the solutions you have provided to my questions! Two days ago, I got into UC Berkeley! I wouldn't have made it without the support from both of you. I just want to update you and I want you to know how amazing you are as mentors!!

I am really grateful to be part of the Hub, and I wish the Hub can continue providing help to students who are college bound.

Winnie
Student at Raoul Wallenberg High School,
San Francisco

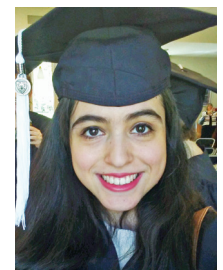
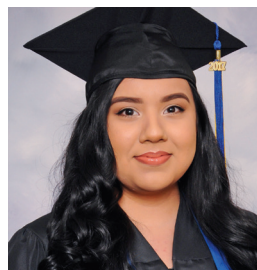
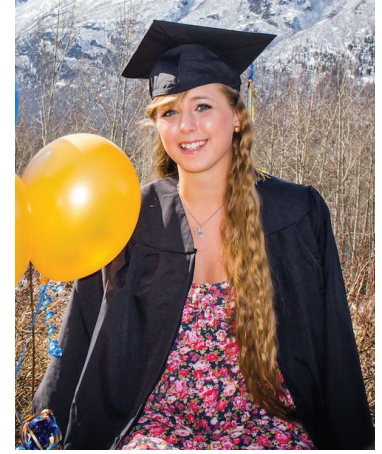
Colleges

SRA students have graduated from, attended, and are currently attending, these four-year colleges and universities across the country.

Agnes Scott College DECATUR, GA
 Alaska Pacific University ANCHORAGE, AK
 American University WASHINGTON, DC
 Babson College BABSON PARK, MA
 Barnard College NEW YORK, NY
 Bates College LEWISTON, ME
 Boston College CHESTNUT HILL, MA
 Boston University BOSTON, MA
 Bowdoin College BRUNSWICK, ME
 Brandeis University WALTHAM, MA
 Brigham Young University - Idaho REXBURG, ID
 Brown University PROVIDENCE, RI
 Bryn Mawr College BRYN MAWR, PA
 California Polytechnic State University,
 Pomona POMONA, CA
 California Polytechnic State University, San
 Luis Obispo SAN LUIS OBISPO, CA
 California State University,
 Channel Islands CAMARILLO, CA
 California State University, Chico CHICO, CA
 California State University,
 Dominguez Hills CARSON, CA
 California State University, East Bay
 HAYWARD, CA
 California State University, Fresno
 FRESNO, CA
 California State University, Fullerton
 FULLERTON, CA
 California State University, Humboldt
 ARCATA, CA
 California State University, Long Beach
 LONG BEACH, CA
 California State University, Los Angeles
 LOS ANGELES, CA
 California State University, Monterey Bay
 SEASIDE, CA
 California State University, Northridge
 LOS ANGELES, CA
 California State University, Sacramento
 SACRAMENTO, CA
 California State University, San Diego
 SAN DIEGO, CA
 California State University, San Francisco
 SAN FRANCISCO, CA
 California State University, San Jose
 SAN JOSE, CA
 California State University, San Marcos
 SAN MARCOS, CA
 California State University, Sonoma
 ROHNERT PARK, CA
 California State University, Stanislaus
 TURLOCK, CA

Carleton College NORTHFIELD, MN
 Colby College WATERVILLE, ME
 Colby-Sawyer College NEW LONDON, NH
 Colgate University HAMILTON, NY
 Columbia University NEW YORK, NY
 Connecticut College NEW LONDON, CT
 Denison University GRANVILLE, OH
 Dominican University of California
 SAN RAFAEL, CA
 Eastern Michigan University YPSILANTI, MI
 Emory University ATLANTA, GA
 Franklin and Marshall College LANCASTER, PA
 George Mason University FAIRFAX, VA
 The George Washington University
 WASHINGTON, DC
 Georgetown University WASHINGTON, DC
 Gonzaga University SPOKANE, WA
 Grinnell College GRINNELL, IA
 Guilford College GREENSBORO, NC
 Hamilton College CLINTON, NY
 Harvard University CAMBRIDGE, MA
 Harvey Mudd College POMONA, CA
 Haverford College HAVERFORD, PA
 Holy Names University OAKLAND, CA
 Howard University WASHINGTON, DC
 Kenyon College GAMBIER, OH
 Lewis and Clark College PORTLAND, OR
 Louisiana State University BATON ROUGE, LA
 Loyola Marymount University
 LOS ANGELES, CA
 Macalester College ST. PAUL, MN
 Manhattan College RIVERDALE, NY
 Manhattanville College PURCHASE, NY
 Marymount College, Palos Verdes
 PALOS VERDES, CA
 Massachusetts Institute of Technology
 CAMBRIDGE, MA
 McDaniel College WESTMINSTER, MD
 Middlebury College MIDDLEBURY, VT
 Mills College OAKLAND, CA
 Morehouse College ATLANTA, GA
 Mount Holyoke College SOUTH HADLEY, MA
 New York Institute of Technology
 NEW YORK, NY
 Northwestern University EVANSTON, IL
 Notre Dame de Namur University
 BELMONT, CA
 Oberlin College OBERLIN, OH
 Occidental College LOS ANGELES, CA
 Ohio Wesleyan University DELAWARE, OH
 Oral Roberts University TULSA, OK
 Pitzer College POMONA, CA

Princeton University PRINCETON, NJ
 Purchase College SUNY PURCHASE, NY
 Rensselaer Polytechnic Institute
 RENSSELAER, NY
 Ripon College RIPON, WI
 Rochester Institute of Technology
 ROCHESTER, NY
 Santa Clara University SANTA CLARA, CA
 Savannah College of Art and Design
 SAVANNAH, GA
 Southern Oregon University ASHLAND, OR
 St. Edwards University AUSTIN, TX
 St. Mary's College of California MORAGA, CA
 St. Mary's College of Indiana NOTRE DAME, IN
 Stanford University PALO ALTO, CA
 Susquehanna University SELINGSGROVE, PA
 Syracuse University SYRACUSE, NY
 Tufts University MEDFORD, MA
 UC Berkeley BERKELEY, CA
 UC Davis DAVIS, CA
 UC Irvine IRVINE, CA
 UC Los Angeles LOS ANGELES, CA
 UC Merced MERCED, CA
 UC Riverside RIVERSIDE, CA
 UC San Diego SAN DIEGO, CA
 UC Santa Barbara SANTA BARBARA, CA
 UC Santa Cruz SANTA CRUZ, CA
 University of Arizona TUCSON, AZ
 University of Hawaii Manoa MANOA, HI
 University of Idaho MOSCOW, ID
 University of Missouri COLUMBIA, MO
 University of North Dakota GRAND FORKS, ND
 University of Oregon EUGENE, OR
 University of Pennsylvania PHILADELPHIA, PA
 University of Puget Sound TACOMA, WA
 University of Redlands REDLANDS, CA
 University of Richmond RICHMOND, VA
 University of San Diego SAN DIEGO, CA
 University of San Francisco SAN FRANCISCO, CA
 University of Southern California
 LOS ANGELES, CA
 University of the Pacific STOCKTON, CA
 University of Virginia CHARLOTTESVILLE, VA
 University of Wisconsin, Madison
 MADISON, WI
 Webster University WEBSTER GROVE, MO
 Wellesley College WELLESLEY, MA
 Wesleyan University MIDDLETOWN, CT
 Whitman College WALLA WALLA, WA
 Whittier College WHITTIER, CA
 Williams College WILLIAMSTOWN, MA
 Yale University NEW HAVEN, CT



Students Rising Above stands out for its wide-reaching impact in disenfranchised communities by boldly serving our future generation through the college admission process and beyond. It is paving the way for a model approach to providing college access to students from the most marginalized communities by putting an emphasis on persistence through college. SRA turns college “access” into college “success.” It is one of the most effective community-based organizations I have worked with in Northern California.

Kora Shin

Associate Dean of Admissions, Wesleyan University



Our Students Are a Worthwhile Investment

The need has never been greater for a pipeline of employees like SRA students, whose diverse backgrounds will help support emerging global markets, build an inclusive culture, and leverage varied perspectives to yield innovative business solutions. For every \$1.00 spent on the SRA program, over \$4.00 is returned as direct fiscal benefits represented by increases in federal and state tax receipts (and reductions in federal and state benefits) over the lifetime of SRA students as compared to other low-income, first-generation college students entering four-year colleges.² SRA is working to make sure we capitalize on the potential of our youth and invest in our future by developing the workforce we need to thrive in the global economy.

2. *Economic Returns to the Students Rising Above Program*, Clive R. Belfield, Queens College, City University of New York.

My dream to go to college was made possible by the help of SRA. If I wasn't chosen to be a part of SRA, I would probably be failing out of a community college, but instead, I am in a new environment across the country, a Bonner Scholar, and a recurring member of my school's Academic Dean's List.

Patricia Martinez
Class of 2015, Guilford College

Career Development

At SRA, we believe it is never too early to start talking about career development. Career exploration begins while students are still in high school. Like most teenagers, our students have a very limited understanding of the breadth of careers that exist, so our six-year curriculum begins with informational interviewing workshops, job shadowing, and on-site career days with company partners.

From there, SRA's Career Development Team provides individualized support on resume and cover letter editing, interview preparation, and internship application guidance. Through a series of age-targeted workshops, webinars, and online tools, students build concrete skills to set them up for professional success. They also have access to SRA's career mentor network of 400+ volunteers, all offering industry-specific coaching and advice.

With SRA's assistance, more than 85% of our students are in career-ladder roles or graduate school with 12 months of college graduation.

In 2016-2017, SRA:

- ★ Offered over **200** personalized job interview preparation sessions
- ★ Organized **10** on-site Career Insight Events
- ★ Collaborated with over **130** Employer Partners
- ★ Placed **267** students in internships through partners or other assistance



**91% SRA
Bachelor's Degree
Completion Rate**



Internships and Company Partners

The SRA Internship Program has built strong ties with community partners to provide meaningful summer internships and full-time employment. Our students build vital professional networks and develop the qualities, confidence, and experience employers seek as students transition from college to career. Our students enter the workforce with the professional and life skills needed for success. Employers have access to a diverse pipeline of future leaders!



Their Support Goes Beyond Financial

Autodesk has been a generous supporter of Students Rising Above since 2015, offering sponsorship of our 2017 Annual Student Retreat, and hosting our kick-off Alumni Association event at the Autodesk Design Gallery. Their support, however, goes beyond the check. Autodesk has hosted Career Insight Events for SRA students that afforded the opportunity to network with Autodesk employees from various departments and to learn about their individual career paths. In addition in Summer of 2017 they hosted their first SRA intern, Angelique Allen, to work in their Internal Communications Department, and this fall, they hired SRA alum Lejon Butcher as a Talent Acquisition Coordinator. We look forward to building and deepening our partnership with Autodesk.

"My internship at Autodesk has put me around so many talented and interesting individuals who challenge the way that I think and work in the best way possible."

Angelique Allen





SRA provides us with the tools we need for future success. They are there every step of the way; they are our support system, and they are the reason for our bright future.

Joseph Raffa

SRA Class of 2014, CSU East Bay

NERA is a proud partner with SRA and has been working with its interns for over four years. SRA interns have been hard-working, smart, and eager to learn what we do. The students that come to us “dive in” and are willing to branch out and take on intellectual challenges. NERA has benefited greatly from working with students from diverse backgrounds and experiences. We look forward to continuing our partnership with SRA for many years to come!

Sarah Butler

Managing Director

NERA Economic Consulting

San Francisco, California

The team at Sherpa has been extremely impressed with the Students Rising Above program. We obviously love its mission; what sets it apart is its fine-tuned, efficient process and of course the talented, energetic group of student-interns. We see a bright future for SRA and the young women and men they support. We’ll look forward to expanding our partnership in the future.

K.C. Watson

CEO & Co-Founder

Sherpa Digital Media, Inc.

Redwood City, California

SRA Alumni: Then and Now

In 2016, Joe Williams was the first in his family to graduate from college, with the unique combination of a Theatre major and a Computer Science minor from Lewis & Clark College. Beyond his interesting choice of areas of study, there's an even more intriguing story; as a former foster child, the odds were against Joe ever attending college, let alone graduating. Nationwide, only 3% of students in foster care obtain their bachelor's degrees.

That's not to say that Joe didn't struggle in college. He relied heavily on his advisor, Jasmine Amar, to help get him through some of the dark days. "Jasmine helped me a lot through college. Many days I felt like I needed to come back home and deal with family. Jasmine encouraged me each time that this was where I needed to be for my future."

Naturally curious, Joe took full advantage of the internship opportunities available to him during his five years with SRA. His first internship was at the Aquarium of the Bay, where Joe served as a "Graphic Preparator," illustrating and creating many of the exhibit signage. Joe then moved on to Wells Fargo, with an internship in Corporate Risk, before landing an internship at SF-based Mission Bit, founded by SRA alum and board member, Stevon Cook. With Stevon's guidance, Joe taught a six-week course to middle school students on coding in Java for Android phones.

Since graduating, Joe interned and landed a full-time job at AppsFlyer as a Support Engineer, a position that draws on his technical skills background as well as his natural gifts with people, and has enabled him to travel globally. It's also allowed Joe the chance to give back to SRA by offering internships and career guidance to current SRA students, as well as attend our annual kick-off retreat in the Santa Cruz mountains.



"I'd like to be at the point where I'm helping at my capacity. I definitely want to be a part of every retreat that I can—I loved getting to be on the other side of the table from the kids, and really fun to get to see the other side of the table, too!"

Joe Williams

Meet Our Alumni



Lejon Butcher
TALENT ACQUISITION
COORDINATOR, AUTODESK
*Sonoma State University,
Class of 2014
SRA Class of 2011*



Gabriela Trujillo
INTEGRATED MARKETING
SPECIALIST, SAP
*Mount Holyoke College,
Class of 2015
SRA Class of 2010*



Ali Rucker
BUSINESS MANAGER,
COUNTY LINE HARVEST
*Wellesley College,
Class of 2011
SRA Class of 2007*



Aaron Love
FRAUD SPECIALIST,
WISH
*St. Mary's College of California,
Class of 2013
SRA Class of 2008*

Our Generous Donors

With gratitude and profound appreciation, we acknowledge the following donors for the past two years for their generous support of our students and the program. We sincerely apologize for any inadvertent errors or omissions.

\$1,000,000 and above

Anonymous Donor

\$300,000 to \$999,999

Richard F. Aster
Endowment Fund
The James Irvine
Foundation
The Julia Burke
Foundation

\$100,000 to \$299,999

Caryl & Ralph Cechettini
Connie & David Lowe
Julie & Allen Lowe
May & Stanley Smith
Charitable Trust
National Philanthropic
Trust
Solid Rock Foundation
Yahoo! Employee
Foundation

\$50,000 to \$99,999

Autodesk
Amy & Shigefumi Honjo
Kaiser Permanente
Community Benefit
Program
Kimball Foundation
Sarah & Michael Loughlin
Susan & Ed Lowe
McMurtry Family
Foundation
Robert S. Odell and
Helen P. Odell Fund
Sharks Foundation
Leo M. Shortino Foundation
Wayne and Gladys Valley
Foundation
Wells Fargo Foundation

\$25,000 to \$49,999

Anonymous Donors
Barulich Family
Foundation

Louis L. Borick
Foundation
Chevron Corporation
Cox Foundation
Gail & John Diserens
Judy & Roger Ecker
Susan Flagg &
Carlo Rocca Fund
Vicky Friedman
Joanne & Jon Goldstein
Hazel Foundation
Dorothy Kaplan
George Lucas Family
Foundation
Kristen &
Timothy McCarthy
Marjorie McCarthy
Dana Morton &
Robert Emery
Shereen Motarjemi
Noris Foundation
The O'Shea Foundation
John Stock
Union Bank of California
Kathy Vick &
Matthew Rogers
Jane & Robert Wallace

\$10,000 to \$24,999

Anonymous Donors
Apple Inc.
Arborwell
Atlassian, Inc.
J. W. Bagley
Foundation
Patricia &
Stephen Barulich
CBS Interactive
Carlyn Clause &
Alexander Brainerd
The Morris Dantzker
Foundation
Judy & Charles DeHont
Mark Dentinger
Dodge & Cox
Suzi & Allen Duemey

East Bay Insurance
Agents Charitable Fund
Flora & Robert Feldman
Gamble Foundation
Carl Gellert and
Celia Berta Gellert
Foundation
Jennifer Gilson
Diana & Mel Haas
Lee Hanson &
Don Scherer
Tania Hanson-DeYoung &
Wallace De Young
Jack and Jill
of America, Inc.
Philip E. Kahn
Jean & Alan Kay
David Kirp
Koret Foundation
Robert Kukuchka
Don Leonard
Robin Levi & John Hayes
Erich Lichtblau
Gail & Jim Lopes
Lynne & Tevis Martin
Joseph & Mercedes
McMicking Foundation
Dave Menninger
Andrea & Rich Moore
Nichols Foundation
The Raymond K. & Natha
Ostby Foundation
PG&E Corporation
Foundation
Joseph Pedott Perpetual
Endowment Trust
PricewaterhouseCoopers
LLP
Cynthia & Vincent Retort
Linda Rindt & Roger Sears
The Rock Foundation
Joyce Sakai
SAP Labs
Jerilyn & David Schricker
Ann Sherpick
Sippel-Farb Family Fund

Marti & Dana Sketchley
Smith Family
Foundation
Cheryl Smith
Nina & Herbert Stone
Hans Thurnauer
Family Trust
Donald Ticknor
Lynne Walter
Jodi & Robert Weis
Western Digital
Foundation
Mary Wikstrom &
Andrew Grimstad
Rosalind &
Robert Williams
Rosemary &
Sheldon Wong
Shirley Wong
Stephanie Yuye

\$5,000 to \$9,999

Nancy Andrews
Rob Bagguley
Beth & Steve Bangert
Barney & Barney
Foundation
Jeanne & Bill Barulich
Bingham, Osborn
& Scarborough
Boston Private Bank
& Trust Company
Barbara Brackenridge
Pierre Breber
Martha Brutocao
Katie Budge
Brian Buenneke
Theresa & Robert Burke
Elaine Bushkov
Ben Cohen
Comis Foundation
Sara Craven
Pam Curtis
Kathryn Donaldson &
Daniel Sherman
Afaf Dudum

Edwards Family	Sandy & Mike Ahrens	Nick Cihak	Evelyn Gray
Educational Foundation	Joyce & Glen Alcorn	Citi Corp.	Karen & Don Gray
Marwan Fawaz	Selma Alderson	Lydia & Bruno Cohen	Paul Gray
The Filippi Foundation	Wendy & Mike Allard	Cole Hardware	Dorothy Greene &
Beth & Tom Frisher	Doug Allen	Nathan Cope	John Paloglou
Aracely Garcia	Darci Phillips &	Andrew Cortwright	Audrey &
Suzanne & Bob Garrett	Ted Allrich	Alan Cox	Sidney Griffin, Jr.
Google, Inc.	Bryce Anderson	Lynn & Bill Crane	Annelise Grimm
Lorrie & Richard Greene	Lisa & Andy LaVelle	Susan Crocker	Karen Grote
Barb & John Hendricks	Judy & Henry Bailey	Marina & Robert Cuenin	Charlotte &
Kathleen Hobson	Jackie & Randle Barnett	Donna Cummings	Peter Gruebele
Ellen & George Hoyem	Joseph Barolo	Steven Currier &	J. David Hakman
Kristen & Ben Jones	James Bays	Kenneth Kalani	Jan Half
Megan & Paul Kangail	Bear Flag Iron Works	Barbara & James Curry	Kay Hamilton
Nairobi Kim	Phyllis & Scott Bedford	David Davidson	Hanna Boys Center
Tamara & Kenneth Kolda	Jeffrey Behring	Pat & Robert Diamond	Marsha & James Hannay
KPIX-TV	Karen & Greg Berardi	Robert Diestel	Angela Hanson
The Stanley S. Langendorf	Allan Berenstein	Diane Diggins	Janet Hargadon
Foundation	Karlo Berket	Roselee Dunlavy	Linda & Robert Harris
Josephine Lee	Mem Bernstein	Patricia &	Molly & Robert Haslam
Mary Alice & Ken Lewis	Diane & Robert Beuthel	Charles Ellingson	HDR, Inc.
Joseph Malkin	Sandy Bland	Kimberly Ellis &	Marti Hearst &
Motive Power Inc.	Blue Shield of California	Campbell Judge	Carl Shapiro
Wendy & J.J. Mueller	Janine Boehm	The Enersen Foundation	Gorge Heitz
NERA Economic	Linda & Frank Bone	Rose Estrada &	Rosemary Henze
Consulting	Cynthia Ma &	Douglas Lawrence Reilly	Rose & Douglas Herda
Betsy Niles	Treve Bonser	Gabriella & Philip Evans	Thomas Hill
Kevin Oden	Norman Boone	Debra Farb & Eric Sippel	Hilltop Group Charitable
Denise Orwin	Lauren Brener &	Farella Braun	Foundation
Richard Owen	Jeffrey Demain	& Martel LLP	Schyrll Hinrichs
Betsy Packard	Germaine Brennan	Sarah Farrel	Heidi Hofer
Sharon & William Parker	Kate Brinks	Normita Fenn	John Hoffman
Francesca Peck	Linda Britt	Scot Ferrell	Elana Holls
Scott Price	Vanessa Brockway	Diana Ferris	Mary & Tom Hunt
Mary Reilly	Faye & E.J. Brophy	William Fidelholtz	Marshall Hydorn
Robert Half International	Sandra Brown	Joan & Herb Foedish	John Inson
Gloria & Julius Robinson	Denise & Morris Brown	Cynthia & Thomas Foster	Intel Corporation
Yannick & Paul Rochester	Jeannie & John Burke	Candace & John Francis	Kenneth Jacobs
Karl and Alice Ruppenthal	Den Bush	Willard Freeman	Marilyn &
Foundation for the Arts	Nancy Byers-Teague &	Susan & Bill Freeman	Jerome Jacobson
Joann Russell	Brad Teague	John Gaetano	Margaret & Matt Jacobson
Jonathan Sacks	Wayne Campbell	Dana Galante &	Jeannie & Bob Johnson
Susan & Stephen Shortell	Gene Campion	Jack Damato	Rosie Kaplan &
Elaine & Graham Smith	John Candell	Margaret Galloway	Harvey Goldenberg
Anne & Peter Sortwell	Suzanne Carder	Genentech, Inc.	Nancy & Dan Katz
Wendy Tokuda &	Paula Champagne	Bonnie & Robert Gerlach	Susan Kay & Kevin Fox
John Norheim	Charles River Associates	Anne Germanacos	David Kaye
U.S. Bank	Charles Schwab	Gloria Getty	Haldane King
Florence & James Wong	Corporate Foundation	Linda & Jeff Gidre	Marion &
Lori & Paul Yeomans	Darrell Chen	Laura & Eppy Giles	William Kleinecke
The Saul Zaentz Company	Charing Cheung & Po	Victoria Gilliland	Garret Kneger
	Hung Yau	David Goff	Vicki Kooi & Phil Bradley
	Chevron Humankind	Beth Goldberg & J. Cogan	Garrett Krueger
	Matching Gift Program	Goldman, Sachs & Co.	Colleen Kurdy
	John Chittick	Matching Gift Program	Arthur Kurkjian
	Amy & Lee Christel	Sam Goldstein	Norma & Al Lammers
	Diane Chur	Arlene Gould	Angel Lance

\$1,000 to \$4,999

Abbott, Stringham
& Lynch
Linda & Andrew Ach
Pam & Tom Adams

Sandra Larsen
 Sandy & Ralph Larson
 Brenda Law
 Heidi & Jay Leupp
 Eileen & Mark Lewis
 Kim Licht
 Raymond Lifchez
 Lee Liseian
 Dawn Long
 The Beth Longwell
 Foundation
 Kyle Loving
 Sally & Patrick Lucia
 Marvin Lundwall
 Connie & Bob Lurie
 Foundation
 Chip Lutton
 Shirley Lyons
 Julie Williams Lytle &
 J. Scott Nesbit
 Macys.com
 Tamara Magee
 Fran & Craig Mansfield
 Joan & Gordon Marks
 Michael Mastrocola
 Jeanette &
 Laurance Mathews
 Carolyn Tom &
 Encarnacion Matta Jr.
 Jan & Greg McAdoo
 Madeleine McCarthy
 Joanne McGrail
 Janet McKinley
 Stephanie McKown
 Stephen McLin
 Charlotte &
 Patrick McMillan
 Barbara Means
 Donna Medeiros
 Rakesh Mehta
 Barbara Meislin
 Bridgid Mellon
 Metcon Ti, Inc.
 Sadie Meyer and
 Louis Cohn Foundation
 Kathy Miller & Allan Moir
 Betsy & William Miller
 Susan & Bob Miller
 Cindy Montgomery
 Ann & William Moon
 Molly Moore &
 Paul Kennedy
 Mae Frances Moore
 Nancy & Brian Moriarty
 Mosaic Financial
 Partners, Inc.

Nancy & Michael Mudd
 Robbie & David Murphy
 Katherine Napoleone
 Stephen Nelson &
 Brian Yoshida
 William Niland
 Ed Nomura
 Margaret Nongauza
 Novartis
 Kim Nguyen & Todd Mills
 Tiffany Obenchain &
 Spencer Crawford
 Eamon O'Driscoll
 Orinda Funds
 Peninsula Community
 Foundation
 Stephen Perreault
 Patricia Perry &
 Stephen McPhee
 Tammie & Glenn Perry
 Leslie Peterson
 Ms. Doris Peterson
 Catherine Pfeil
 The Bruce &
 Lynne Phelps Fund
 Liana & Adam Plumpton
 James Pohl
 Port of Oakland
 Elanor & John Powers
 Andrew Preston
 Maegine Warehouse Puleo &
 Kevin Puleo
 David Puvirajasingam
 Barbara Quay
 Brian Quijano
 Richard Rabin
 Larry Rabkin
 Lori Ramani
 Mary & Robert Read
 Ann Reeves &
 Richard Wilmer
 Annie & Andy Reid
 Laura Reiling
 Russeli Rheingrover
 Ken Rice
 Carol Richardson-Cole
 Susan Rideout
 Julie Riele
 Doug Robertson
 Karen Robson &
 Bernard Druck
 Rosemary Rodd
 Melissa & Paul Roesler
 Bev & Len Rohde
 Helen Romain
 Martha & John Ross

Marian Ross
 Lane Rowland
 Kathleen & Melvin Ruiz
 Mary Ryan
 Kay & Doug Ryan
 Salesforce.com
 Robert Saltzman
 San Francisco Symphony
 Erin & Sean Santana
 Nik Sathe
 Jackie & Paul Schaeffer
 Monika & Mario Scherrer
 Scott Schnugg
 Chris Schoenfeld
 Segment.io Inc.
 John Seidell
 Caren Shapiro &
 Sanjiv Sanghvi
 Jinfan Shaw
 Florence Silverman
 Ellin Simmons
 Arlene & Matt Sirott
 Nellie Smith
 Soule Foundation
 Mary & David Souza
 Keith Spears
 SRI International
 Alan Stangenberger
 Dr. Kristine Steensma
 Gerry & Charles Stees
 Marilyn Stein
 Amy & Brad Steinle
 Trisha Stiles
 Ronald Stovitz &
 Mr. Danell Zeavin
 Chapman Stranahan
 Kathleen Sullivan
 Liz Sullivan & Jim Steinle
 Summit Associates
 Sunnyvale Presbyterian
 Church
 Julie & Joshua
 Sweetkind-Singer
 Ms. Masako Takahashi
 Arleen & Glenn Takayama
 Leah Tarlen & John Moffat
 Barry Taylor
 Susan & Randall Teppen
 Jennifer Terukina
 Ann & Steve Terwilliger
 Stephanie Thompson
 Maggie Thompson
 Thunen Family
 Foundation
 Carol Tjian
 Patty & Brian Topkis

Rosalie Torres
 Nancy & Peter Townsend
 Colleen Traynor
 Lea Ann Tratten &
 Jim Donatell
 I-Fang Tsaur &
 Roberto Ziche
 Cathy & Thomas Tyson
 Holly & Kris Van Giesen
 Jean Veit
 Venable Foundation
 Gwynned Vitello
 Susan & Charlie Wall
 Marilyn & James Wallace
 The Walt Disney
 Company Foundation
 Steve Ware
 Judy & Rob Warehouse
 Alice & Arthur Weil
 Wells Fargo Bank
 Noreen & Corey West
 Dale & Bruce Wheeler
 Lorraine &
 Richard Whitehurst
 Sandy Williams
 Marsha Williams
 Marlene & Donald Wilson
 Polly & Ward Wolff
 Susan Wolin &
 Ralph Protsik
 Lily Wong &
 William Hilton
 Scott Wong
 Kathy Woodward
 Cynthia & Ken Wornick
 Jim Wraith
 Alex Wrigley
 Dr. Lawrence Wu
 Karen & Mark Yoltan
 Gail Yoshida
 Claus Zielke



You Can Make a Difference

Contribute

Make a tax-deductible donation and help us send even more students to college next year. Many employers have a matching gift program.



Leave a Legacy

Include SRA in your estate plans and support students in their pursuit of a higher education for generations to come.



Volunteer

SRA has numerous volunteer opportunities throughout the year, including helping students prepare a resume, working at an SRA event, and even providing pro bono healthcare or dental services.

Employ an SRA Student or Hire an SRA Alum

Provide SRA students with paid internships or allow them to participate in "job shadowing" to learn about your profession first-hand.



Establish a Named Scholarship

Help our hard-working, motivated students go to college by establishing a scholarship in your name, your company's or foundation's name, or in the name of a loved one. SRA will work closely with you to craft a personal scholarship and to provide opportunities to meet the students directly supported by your scholarship.



Attend the Annual Gala

SRA's annual Gala raises critically needed funds to support our students through college. Visit our website and contact us for more info.

Become a Mentor

Give of your time by serving as a role model and source of guidance and support for an SRA student.

Follow Students Rising Above on Social Media



Students Rising Above, PO Box 192492, San Francisco, CA 94119-2492
studentsrisingabove.org • Tax ID: 81-0615887

Statement of Financial Position



Current Assets

Cash and cash equivalents	\$ 1,216,533
Grants and contributions receivable (net)	354,125
Other receivables	5,596
Prepaid expenses	40,654
Total current assets	1,616,908

Equipment and Software (net)	30,122
------------------------------	--------

Other Assets

Grants and contributions receivable (long-term net)	67,552
Investment in marketable securities	5,207,062
Total other assets	5,274,614
	\$ 6,921,644

Current Liabilities

Accounts payable and accrued expenses	214,665
Payroll liabilities	31,459
Total current liabilities	246,124

Net Assets

Unrestricted	5,388,468
Temporarily restricted	1,287,052
Total net assets	6,675,520
	\$ 6,921,644

Year ended June 30, 2017

Statement of Activities



	Unrestricted	Temporarily Restricted	Total
Revenues and support			
Grants and contributions	\$ 1,731,714	\$ 1,424,682	\$ 3,156,396
Special events (net of direct expenses of \$91,700)	933,682	-	933,682
Investment return designated for current operations	303,147	-	303,147
	2,968,543	1,424,682	4,393,225
Net assets released from restrictions	1,246,930	(1,246,930)	-
Total revenues and support	4,215,473	177,752	4,393,225
Expenditures			
Program services	3,252,538	-	3,252,538
Management and general	486,179	-	486,179
Fundraising	518,824	-	518,824
Total expenditures	4,257,541	-	4,257,541
Change in net assets from operations	(42,068)	177,752	135,684
Other gains			
Investment gain in excess of amounts designated for current operations	89,551	-	89,551
Change in net assets	47,483	177,752	225,235
Net assets (beginning of year)	5,340,985	1,109,300	6,450,285
Net assets (end of year)	\$ 5,388,468	\$ 1,287,052	\$ 6,675,520

Year ended June 30, 2017



PO Box 192492, San Francisco, CA 94119-2492 • studentsrisingabove.org
Tax ID: 81-0615887